

## 3.5 mm SINGLE MONO AND STEREO JACKS

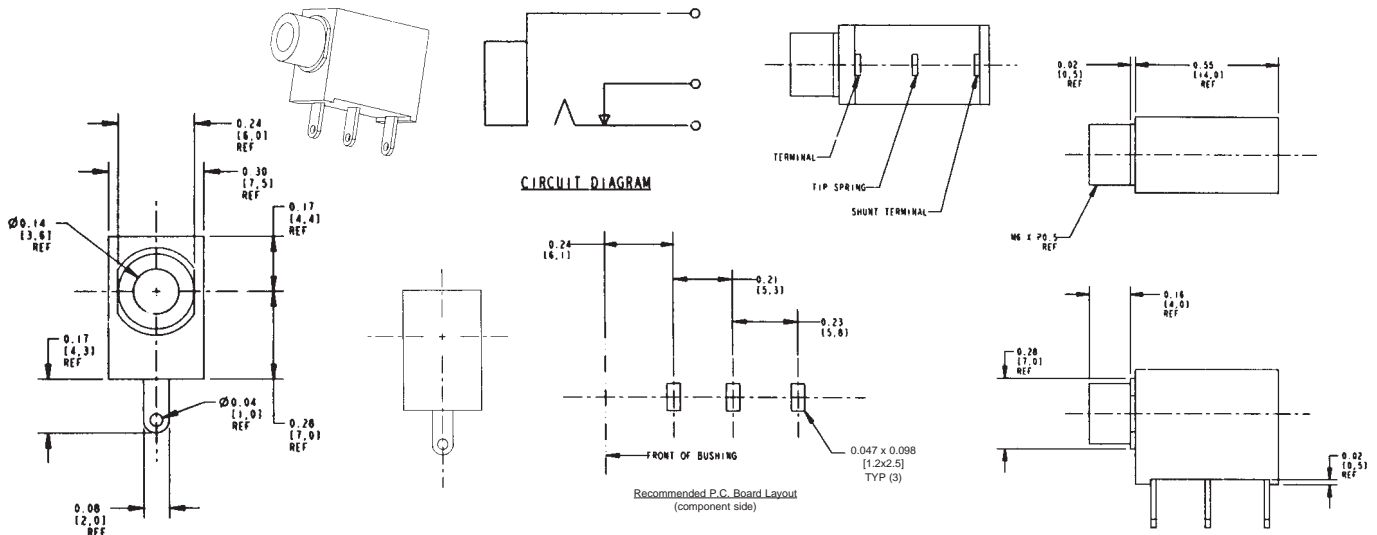
### 35RAPC2AV – MONO, VERTICAL, THREADED

#### MATERIALS

- Coil Spring:** Steel wire.
- Bushing:** Nickel-plated copper alloy.
- Terminal:** Silver-plated copper alloy.
- Tip Spring:** Silver-plated copper alloy.
- Shunt Terminal:** Plated copper alloy.
- Cover:** Thermoplastic, transparent UL 94V-2.
- Body:** Thermoplastic, UL 94V-1 black color.

#### PERFORMANCE SPECIFICATIONS

- Contact Resistance:** 20 milliohms maximum.
- Insulation Resistance:** 100 milliohms minimum at 250V DC.
- Dielectric Withstanding Voltage:** 250V AC.
- Life:** 5000 cycles, minimum.
- Insertion Force:** 0.88 pounds - 3.5 pounds.
- Withdrawal Force:** 0.88 pounds - 2.64 pounds.



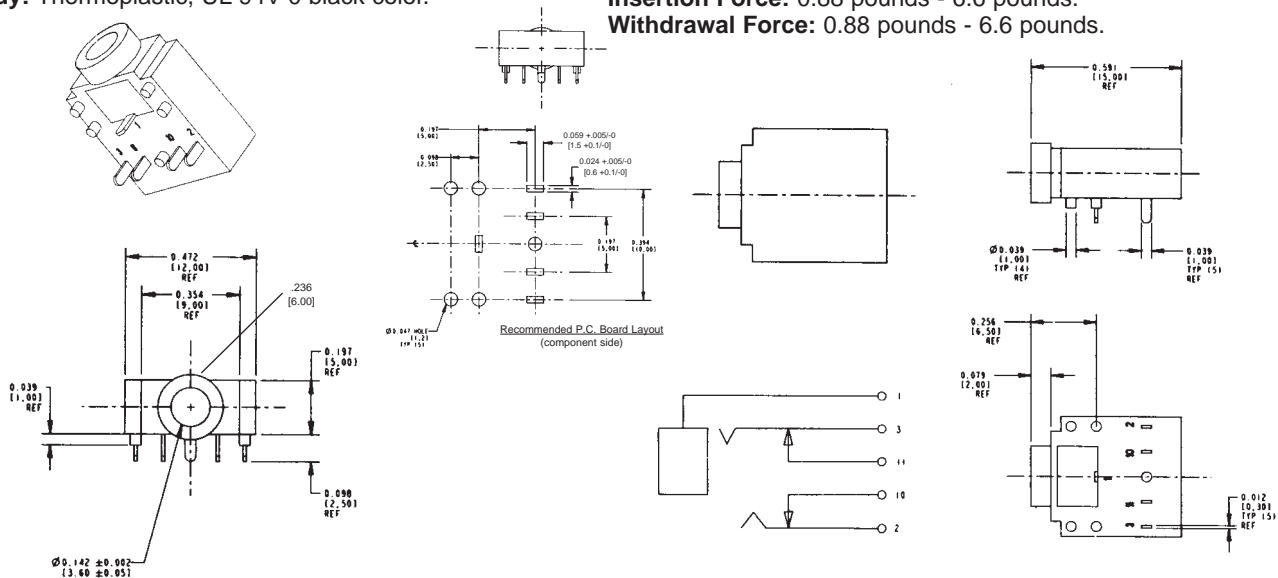
### 35RAPC4BHN2 – STEREO, HORIZONTAL, NON-THREADED

#### MATERIALS

- Cover:** Thermoplastic, UL 94V-1 black color.
- Shunt Terminals:** Silver-plated copper alloy.
- Ring Spring:** Copper alloy.
- Tip Spring:** Special silver plating.
- Ground Terminal:** Plated copper alloy.
- Metal:** Nickel-plated copper alloy.
- Body:** Thermoplastic, UL 94V-0 black color.

#### PERFORMANCE SPECIFICATIONS

- Contact Resistance:** 30 milliohms maximum, initial 100 milliohms maximum., after life.
- Insulation Resistance:** 100 megohms minimum at 500V DC.
- Dielectric Withstanding Voltage:** 500V AC.
- Life:** 5000 cycles, minimum.
- Insertion Force:** 0.88 pounds - 6.6 pounds.
- Withdrawal Force:** 0.88 pounds - 6.6 pounds.



DIMENSIONS ARE FOR REFERENCE ONLY  $\frac{\text{Inch}}{\text{mm}}$

NOTE: Contact your Switchcraft Representative for price and delivery.